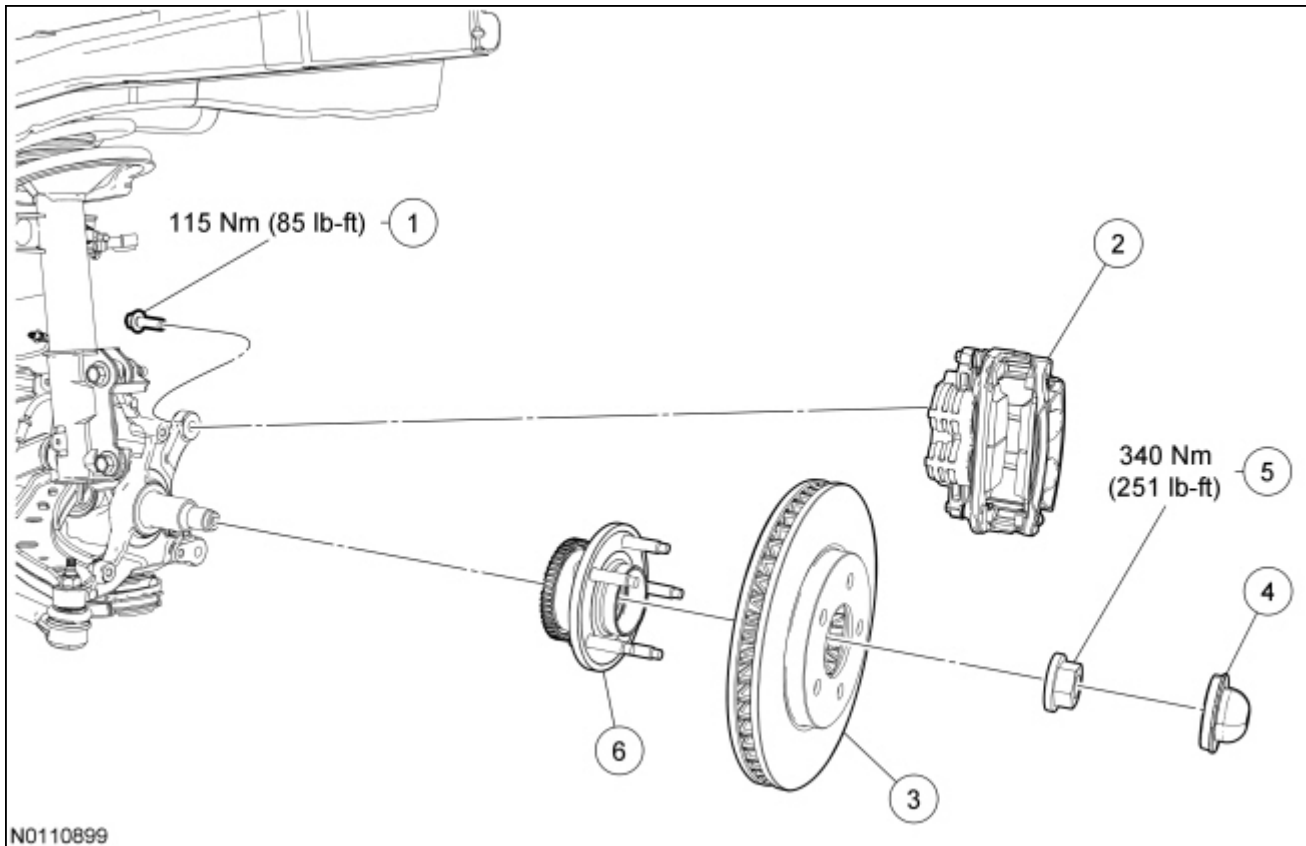


Wheel Bearing and Wheel Hub



N0110899


Item	Part Number	Description
1	W710233	Brake caliper anchor plate bolt (2 required)
2	—	Brake caliper, pads and anchor plate assembly
3	1125	Brake disc
4	1N135	Wheel hub grease cap
5	3B477	Wheel hub nut
6	1104	Wheel hub assembly

Removal and Installation

NOTICE: Suspension fasteners are critical parts because they affect performance of vital components and systems and their failure may result in major service expense. New parts must be installed with the same part number or equivalent part, if replacement is necessary. Do not use a replacement part of lesser quality or substitute design. Torque values must be used as specified during reassembly to make sure of correct retention of these parts.

1. Remove the wheel and tire. For additional information, refer to [Section 204-04](#).
2. **NOTICE:** Do not allow the caliper and anchor plate assembly to hang from the brake hose or damage to the hose can occur.

Remove the brake anchor plate bolts and position the brake caliper and anchor plate assembly aside.

- Support the caliper and anchor plate assembly using mechanic's wire.
 - To install, tighten to 115 Nm (85 lb-ft).
3. Remove the brake disc.
 4. Remove and discard the wheel hub grease cap.
 5.  **WARNING: The wheel hub nut is a one-time use item and a new wheel hub nut must be installed. Failure to do so may result in hub separation from the vehicle and loss of vehicle control. Failure to follow this instruction may result in serious injury to vehicle occupant(s).**

Remove and discard the wheel hub nut.

- To install, tighten the new nut to 340 Nm (251 lb-ft).
6. Remove the wheel bearing and wheel hub.
 7. To install, reverse the removal procedure.
-